



FITTING INSTRUCTIONS

Product:	T15 Fleet Frontal Protection System
Vehicle:	Mazda BT50 09/08+
Part No.	070SB15X46Z

Australian Standards Relating to Installing Vehicle Frontal Protection Systems (VFPS): AS 4876.1-2002

- Do not attach V.F.P.S. to vehicle using anchorages not intended for this purpose (e.g. engine mounting bolts), other than those specified by the V.F.P.S. manufacturer in this instruction.
- Do not use this product for any vehicle make or model other than those specified by the V.F.P.S. manufacturer (as above).
- Do not remove any plaques or labels from the V.F.P.S.
- Do not modify the structure of the V.F.P.S. in any way.

Warranty

- If any product or part of a product manufactured by TJM is found to be defective during a period of three (3) years after the date of purchase, TJM shall repair (at TJM's discretion) the defective product or part.
- Any defect in a product distributed by TJM, but not manufactured by TJM, shall be dealt with in accordance with, and to the extent of, the warranty offered by the manufacturer of that product.
- TJM does not warranty that the products manufactured by it comply with the laws of the place where those product are purchased or used. It is the sole responsibility of the purchaser to ascertain whether products being purchased, or the affixation of those products to any other object, comply with local laws.
- Except to the extent described in this warranty, TJM shall not be liable for any other claims, including claims arising from incorrect fitment, product or vehicle modification, faulty design, the use of the product on any indirect special or consequential damage or injury to any person, company or other entity.
- Modification or alteration to any product manufactured by TJM to enable fitment in conjunction with other vehicle accessories or modifications (e.g. lift kits) will void any warranty claims.

Bolt tensions	Dia. (mm)	Nm	ft.lbs	Dia. (inch)	Nm	ft.lbs
All bolt tensions are as follows unless otherwise specified.	5	5	4	1/4"	9	7
	6	9	7	5/16"	22	15
	8	22	16	3/8"	33	27
	10	44	32	7/16"	55	43
	12	77	57	1/2"	86	66

BOLT KIT	
Quantity	Description
2	M5 x 0.8 x 20mm Bolt - K0688
2	M5 x 0.8 Nyloc Nut - K0604
2	M5 Flat Washer - K0417
14	M6 x 1.0 x 16mm Bolt - K1232D
28	M6 Flat Washer - K0897
14	M6 x 1.0 Nyloc Nut - K0605
4	M8 x 1.25 x 25mm Bolt - K0553
4	M8 x 1.25 Nut - K0585
4	M8 Spring Washer - K0620
4	M8 Flat Washer - K0922
6	Scotch Lock - K0419

FITTING KIT	
Quantity	Description
1	Indicator / Park Light Assembly - 428IND-PKCLR
1	Mi-Fi Mount Bracket - 87844
1	Wing Underbody Guard RH - 87843R
1	Wing Underbody Guard LH - 87843L

For further information contact T.J.M. Head Office on (07) 3865 9999. Distributors Australia wide.



FITTING INSTRUCTIONS

Product:

T15 Fleet Frontal Protection System

Vehicle:

Mazda BT50 09/08+

Part No.

070SB15X46Z



1. Open the bonnet, remove the two plastic clips from the bottom of the bumper and remove the two screws (one on either side) in the wheel arch. If fitted, disconnect the fog light loom from the fog lights.



2. From the top of the grille, remove two plastic clips and two screws.



3. Insert a flat blade screwdriver into the slot under the rubber bonnet stop and lift up. Remove the clip and repeat for the other side.
4. Gently disengage the clips at the bottom of the grille. Remove the grille from the vehicle.

For further information contact T.J.M. Head Office on (07) 3865 9999. Distributors Australia wide.



FITTING INSTRUCTIONS

Product:

T15 Fleet Frontal Protection System

Vehicle:

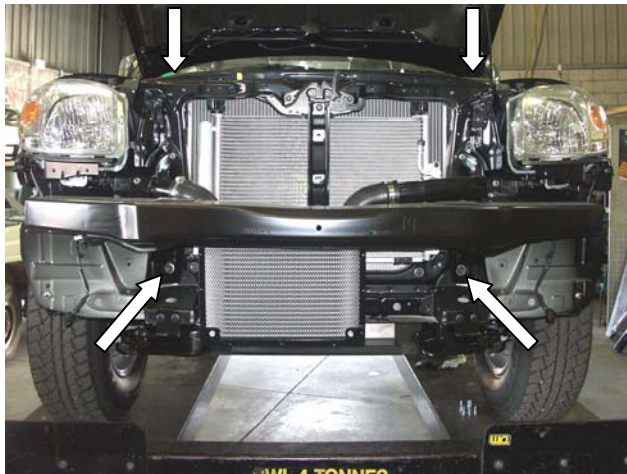
Mazda BT50 09/08+

Part No.

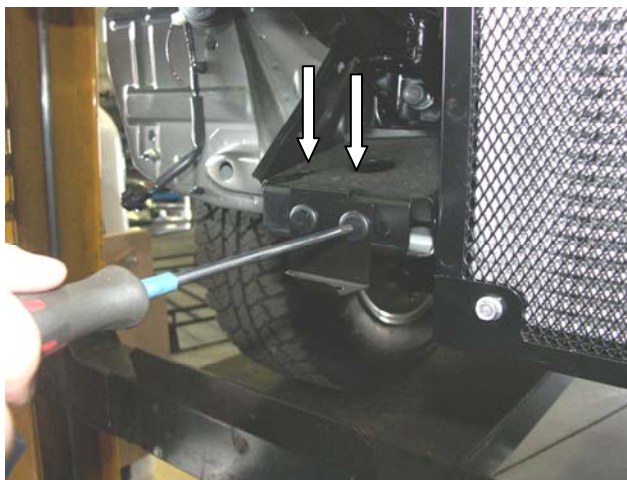
070SB15X46Z



5. Remove the two plastics that are located under the top of the grille.



6. Carefully remove the bumper.
7. Remove and discard the front intrusion beam from the vehicle. Two bolts are located at the end of the chassis rails and two bolts located inside the engine bay. Retain the bolts for bull bar fitting.



8. Using a Phillips head screwdriver, remove the plastic screw clips and the bumper retaining brackets. Discard.

For further information contact T.J.M. Head Office on (07) 3865 9999. Distributors Australia wide.



FITTING INSTRUCTIONS

Product:

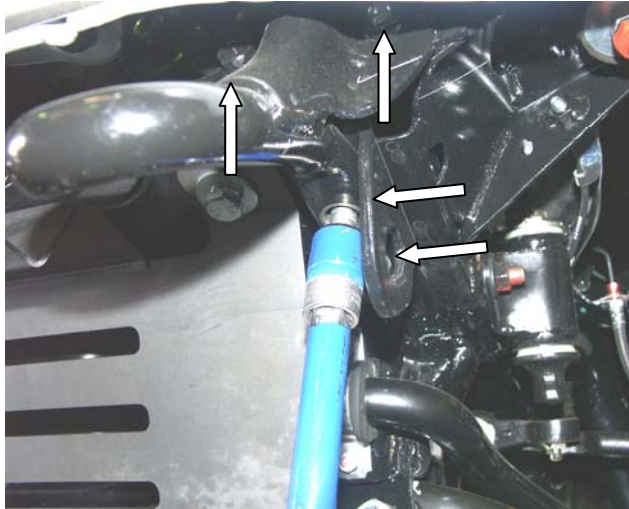
T15 Fleet Frontal Protection System

Vehicle:

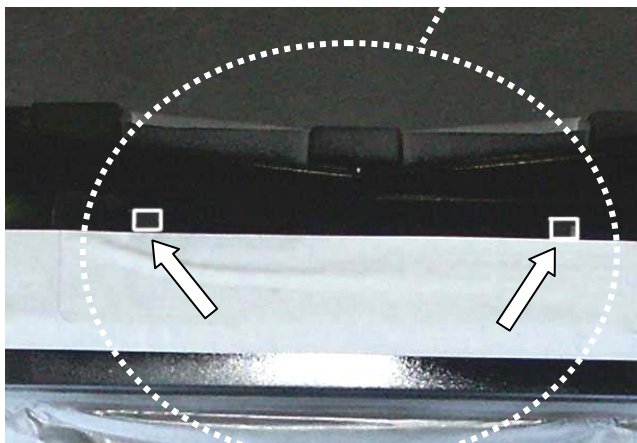
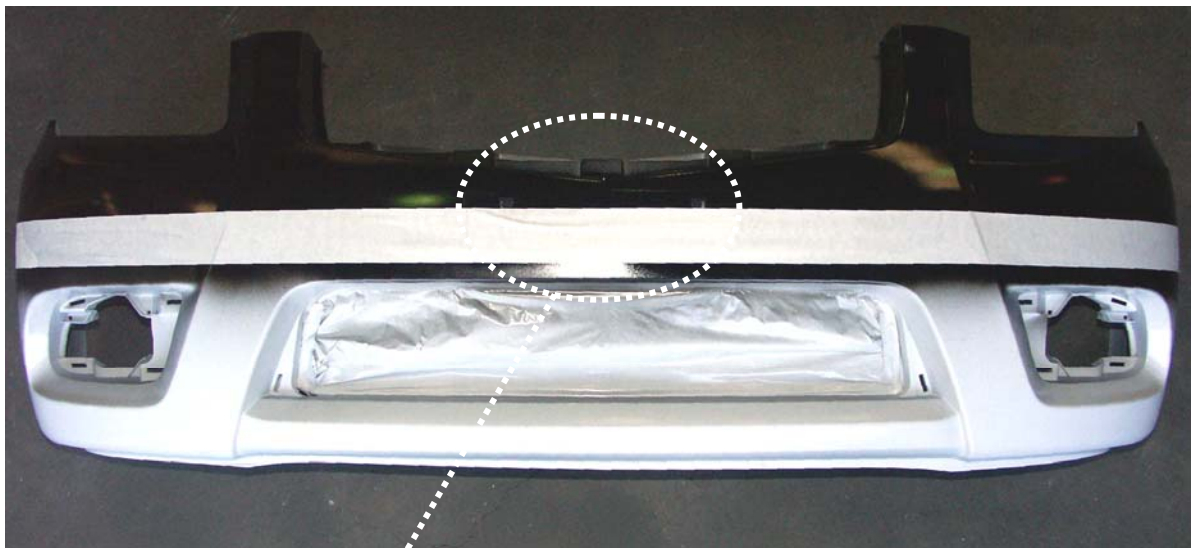
Mazda BT50 09/08+

Part No.

070SB15X46Z



9. Remove the tow hook from the underside of the left hand chassis rail and the tie down hook from the right hand side. Retain the bolts and brackets for re-fitting.



10. Remove the flares from the bumper. Mask the bumper in a straight line with the tape running along the number plate mounting holes as show.

For further information contact T.J.M. Head Office on (07) 3865 9999. Distributors Australia wide.



FITTING INSTRUCTIONS

Product:

T15 Fleet Frontal Protection System

Vehicle:

Mazda BT50 09/08+

Part No.

070SB15X46Z



11. Using an appropriate saw, carefully cut along the top of the masked line. De-bur the cut edge of the bumper.



12. Re fit the cut bumper to the vehicle.



13. Fit the indicator surrounds to the bar by pushing the clips over the rear of the surround.

For further information contact T.J.M. Head Office on (07) 3865 9999. Distributors Australia wide.



FITTING INSTRUCTIONS

Product:

T15 Fleet Frontal Protection System

Vehicle:

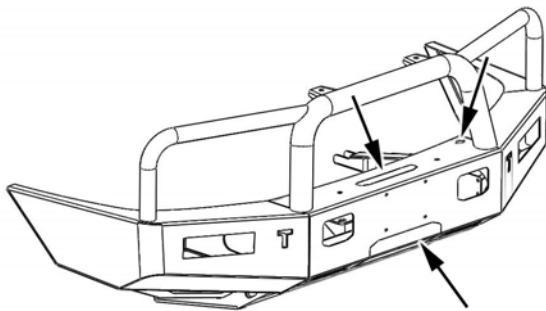
Mazda BT50 09/08+

Part No.

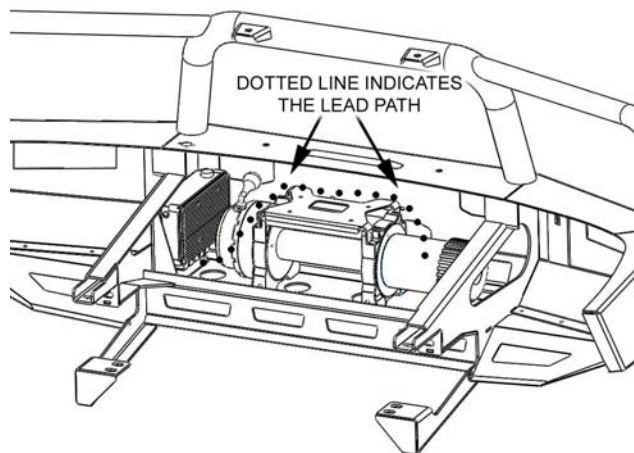
070SB15X46Z



14. Fit the indicator to the surrounds with the clearance light to the outside. Fix in place using the screws supplied.



15. If a winch is to be installed, knock out the micro-jointed sections (shown) on the bar and attach the Roller Fairlead using the bolts supplied with the winch. Then fit the winch to the winch frame following the instructions supplied with the winch.



16. If fitting an OX or V-Series winch, fit the control box to the bracket supplied with this bar, then fit the bracket to the winch frame, using M8x1.25x25mm bolts, flat and spring washers. Fit the Mi-Fi bracket (supplied with the winch) in place and run the leads across the top of the bracket. Using cable ties, secure the leads in place utilizing the bolt holes in the top face of the bracket.

For further information contact T.J.M. Head Office on (07) 3865 9999. Distributors Australia wide.



FITTING INSTRUCTIONS

Product:

T15 Fleet Frontal Protection System

Vehicle:

Mazda BT50 09/08+

Part No.

070SB15X46Z



17. With the assistance of another person, lift the bar into position and secure it in place to the front of the chassis using the original bolts removed in step 7. Do not tighten.



18. Re-fit the original bolts removed in step 7 to the inside of the engine bay. Do not tighten.



19. Remove the tie down hook from the tow hook and discard.

For further information contact T.J.M. Head Office on (07) 3865 9999. Distributors Australia wide.



FITTING INSTRUCTIONS

Product:

T15 Fleet Frontal Protection System

Vehicle:

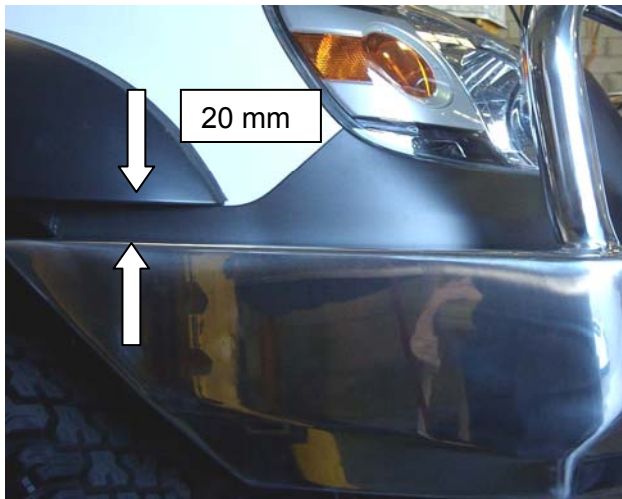
Mazda BT50 09/08+

Part No.

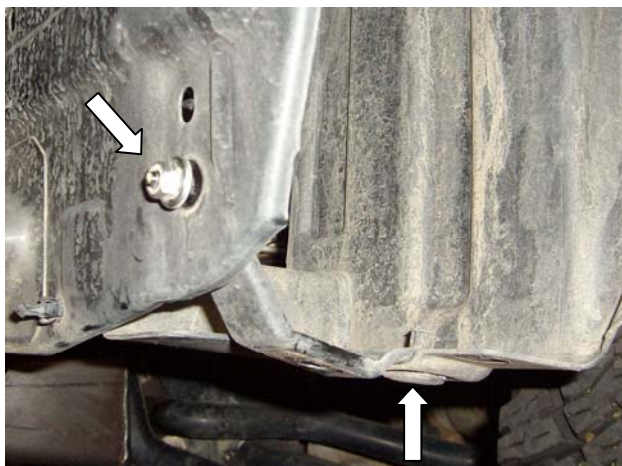
070SB15X46Z



20. On the left hand side re-fit the tow hook to the vehicle using the original bolts. On the right hand side fix the lower winch mount in place using the original tie down hook bolts. Tighten all the bolts to the torque settings listed on page 1.



21. Align the bull bar so that a 20mm gap exists between the top surface of the bull bar and the underside of the flare. Tighten all bolts to the torque settings listed on page 1.



22. Remove and discard the bracket that holds the inner guard to the radiator support panel by removing the nut and the plastic clip. Repeat for the other side.

For further information contact T.J.M. Head Office on (07) 3865 9999. Distributors Australia wide.



FITTING INSTRUCTIONS

Product:

T15 Fleet Frontal Protection System

Vehicle:

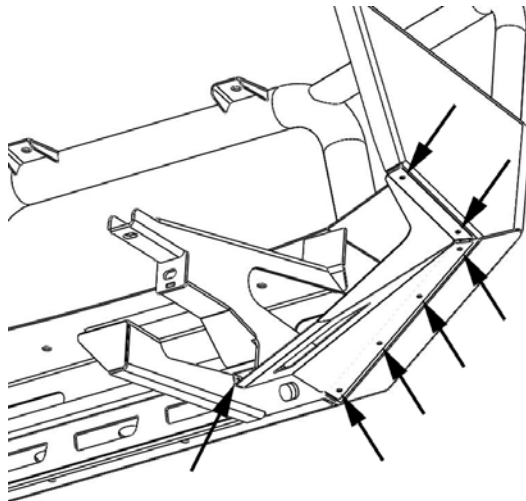
Mazda BT50 09/08+

Part No.

070SB15X46Z



23. Bend the inner guard upwards and attach to the firewall through the hole the plastic clip was removed from and the hole the bracket was removed from using a M6 x 16mm bolt, two large flat washers and a M6 nyloc nut. Repeat for the other side.



24. Secure the Underbody Guards in place on each side (as shown) using M6x1.0x16mm bolts, flat washers and nyloc nuts. Tighten the bolts.

25. Secure the number plate to the bar using the M5x0.8x20mm screws, flat washers and nyloc nuts. Ensure that all fasteners are fully tightened and that, as a result of fitting the bar, no vehicle components are crushed or will chaff.

26. Check the operation of the indicators, park lights and winch (if fitted) to ensure that they are functioning correctly.

For further information contact T.J.M. Head Office on (07) 3865 9999. Distributors Australia wide.