



FITTING INSTRUCTIONS

Product:

T15 Fleet Bull Bar

Vehicle:

Nissan Pathfinder R51 / Nissan Navara D40

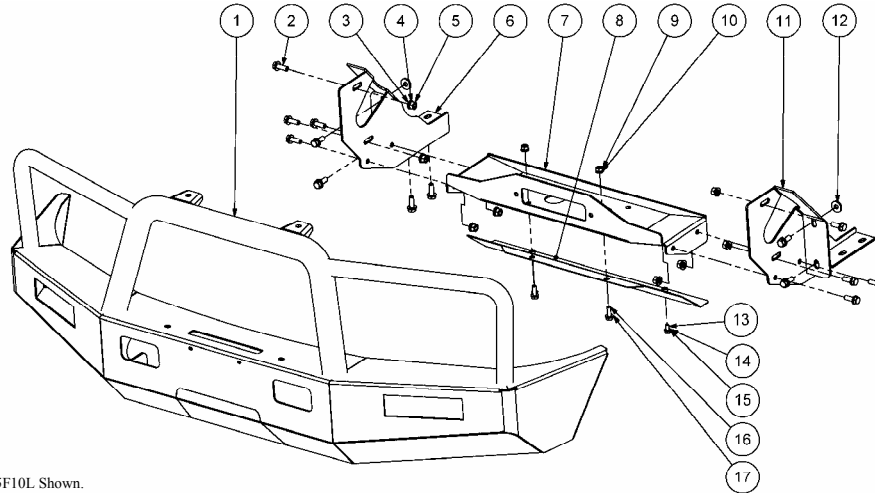
Part No.

070SB15F10L

070AP15F10L

Australian Standards Relating to Installing Vehicle Frontal Protection Systems (VFPS): AS 4876.1-2002

- a) Do not attach V.F.P.S. to vehicle using anchorages not intended for this purpose (e.g. engine mounting bolts), other than those specified by the V.F.P.S. manufacturer in this instruction.
- b) Do not use this product for any vehicle make or model other than those specified by the V.F.P.S. manufacturer (as above).
- c) Do not remove any plaques or labels from the V.F.P.S.
- d) Do not modify the structure of the V.F.P.S. in any way.



070AP15F10L Shown.

ITEM NO.	QTY. 070SB15F10L	QTY. 070AP15F10L	PART NUMBER	DESCRIPTION
1	1	1	070SB15F10L / 070AP15F10L	Bull bar
2	10	14	K0570	Hex head set screw M12 x 1.25 x 35
3	14	22	K0623	Plain washer 1/2"
4	10	14	K0617	Spring washer 1/2"
5	4	8	K0581	Hex Nut Plain M12 x 1.25
6	0	1	87567	RH Chassis mount assembly
7	1	1	87542	Winch frame assembly
8	1	1	87568	Underbody guard plate
9	2	2	K0579	Hex Nut Plain M10 x 1.25
10	2	2	K0621	Spring washer M10
11	0	1	87566	LH Chassis mount assembly
12	2	2	K0638	Plain washer 1/2" x 4mm
13	2	2	K0552	Hex head set screw M8 x 1.25 x 20
14	2	2	K0922	Plain washer M8
15	2	2	K0620	Spring washer M8
16	2	2	K2956	Hex head set screw M10 x 1.25 x 20
17	4	4	K0413	Plain washer M10
18	2	2	K0688	Pan head screw M5 x 0.8 x 20
19	2	2	K0625	Plain washer 3/16" x 1/2" x 20G
20	2	2	K0604	Nyloc Hex Nut M5 x 0.8
21	1	1	428IND-PKCLR	Indicator/Park light pair
22	3 mtrs	3 mtrs	93151	Pinchweld
23	6	6	K0419	Scotchlocks
24	1	1	K3241	T.J.M. Sticker
25	1	1	HC0057	Airbag Sticker

Bolt tensions	Dia. (mm)	Nm	ft.lbs	Dia. (inch)	Nm	ft.lbs
All bolt tensions are as follows unless otherwise specified.	5	5	4	1/4"	9	7
	6	9	7	5/16"	22	15
	8	22	16	3/8"	33	27
	10	44	32	7/16"	55	43
	12	77	57	1/2"	86	66

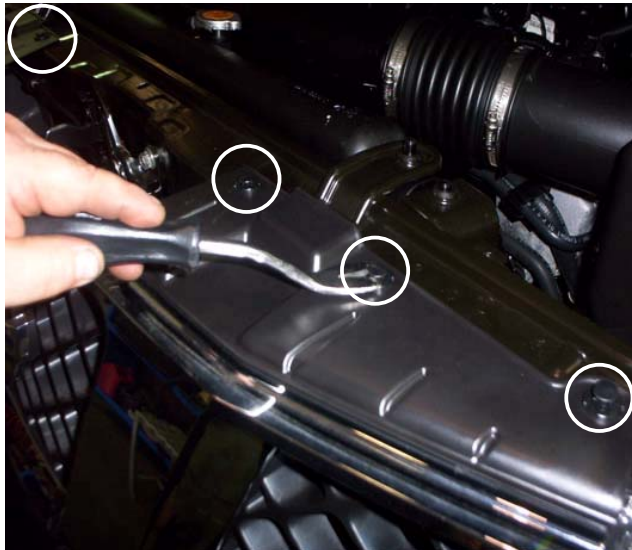


For further information contact T.J.M. Head Office on (07) 3865 9999. Distributors Australia wide.

Warranty

1. If any product or part of a product manufactured by TJM is found to be defective during a period of three (3) years after the date of purchase, TJM shall repair (at TJM's discretion) the defective product or part.
2. Any defect in a product distributed by TJM, but not manufactured by TJM, shall be dealt with in accordance with, and to the extent of, the warranty offered by the manufacturer of that product.
3. TJM does not warranty that the products manufactured by it comply with the laws of the place where those product are purchased or used. It is the sole responsibility of the purchaser to ascertain whether products being purchased, or the affixation of those products to any other object, comply with local laws.
4. Except to the extent described in this warranty, TJM shall not be liable for any other claims, including those claims arising from faulty design, the use of the product on any indirect special or consequential damage or injury to any person, company or other entity.
5. Modification or alteration to any product manufactured by TJM to enable fitment in conjunction with other vehicle accessories or modifications (e.g. lift kits) will void any warranty claims.

IMPORTANT NOTE BEFORE COMMENCING FITMENT OF BAR : ON SOME VEHICLES IT MAY BE NECESSARY TO WIRE A RELAY INTO THE SYSTEM WHEN FITTING THIS BAR.

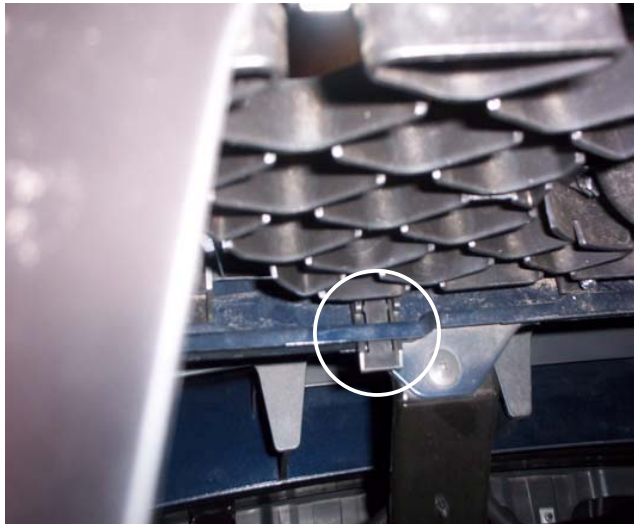


1. Open bonnet and remove 6x top grill clips.

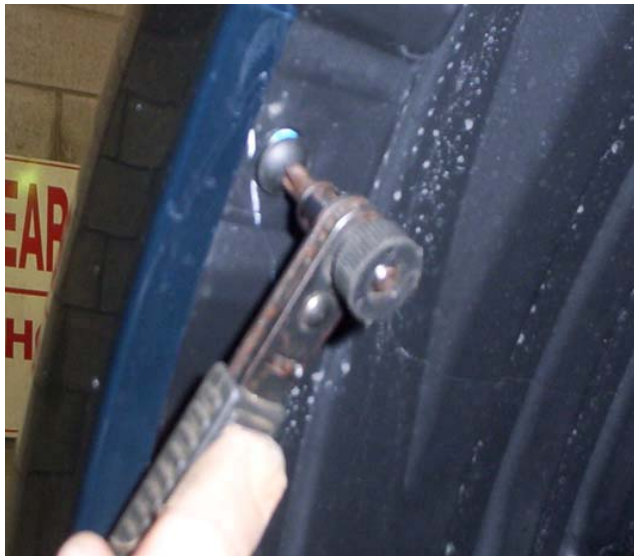


2. Twist 4x front clips to release grill.

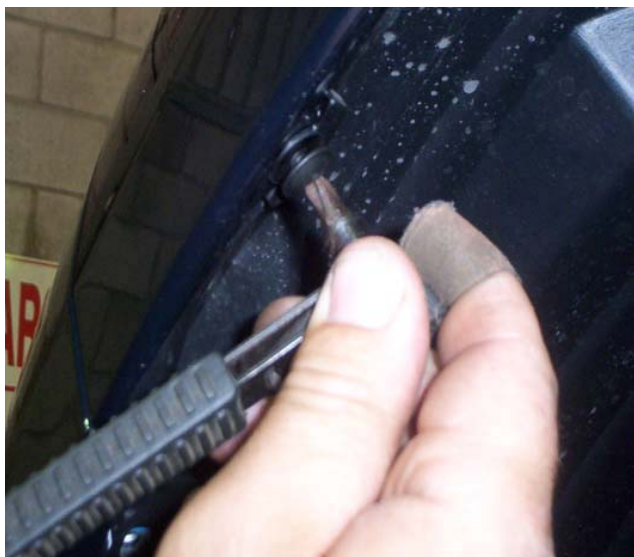
For further information contact T.J.M. Head Office on (07) 3865 9999. Distributors Australia wide.



3. Tilt grill forward and release 4x clips holding grill to bumper



4. Remove 2x screws from inside wheel arch. Retain 1x screw for re-fitment.



5. Remove 1x screw from top, inside wheel arch and retain for re-fitment.

For further information contact T.J.M. Head Office on (07) 3865 9999. Distributors Australia wide.



6. Remove inner guard clips 2x per side and retain for re-fitment.



7. Remove 2x screws each side holding inner guard to bumper.

For further information contact T.J.M. Head Office on (07) 3865 9999. Distributors Australia wide.



8. Remove 6x bolts across lower skirt of bumper.
9. Remove 4x bolts from lower bumper.



10. Remove OE under body guard.
11. Remove toe hook and bolts and retain for re-fitment.



12. If fitted, disconnect OE fog lamps.

For further information contact T.J.M. Head Office on (07) 3865 9999. Distributors Australia wide.



13. Remove 2x M6 bolts either side from inside guard cavity that secure bumper to guard.



14. Remove 3x screw clips holding upper bumper to vehicle.

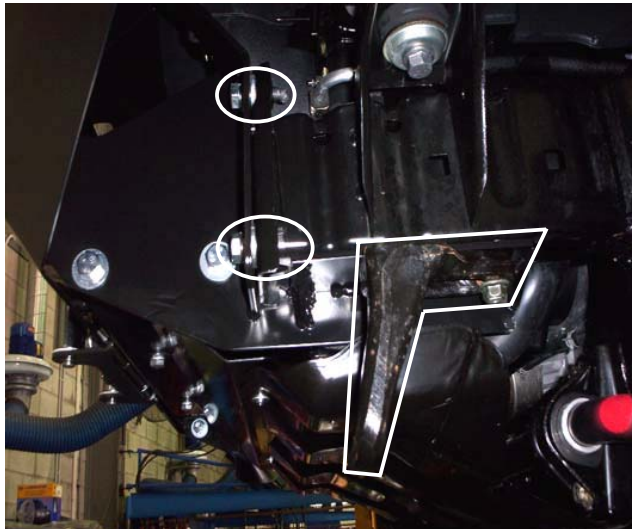


15. Remove bumper and front impact panel.

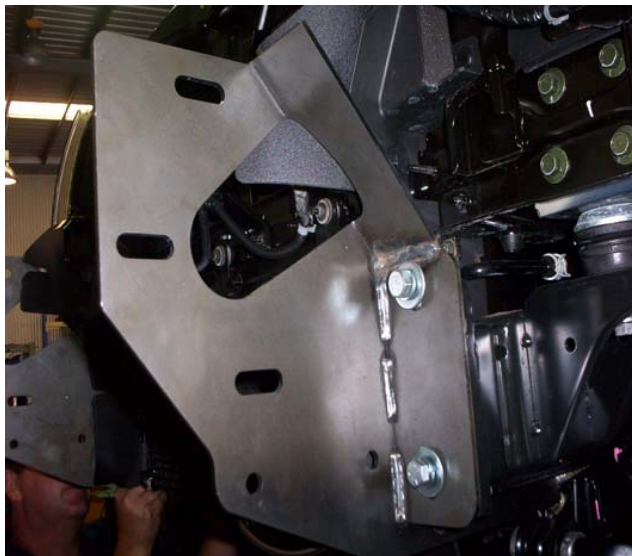
16. Wire parker indicator harness to both sides of vehicle. On some vehicles it may be necessary to wire a relay into the system.

17. Using 4x M12x1.25x35mm bolts, flat washers, spring washers and nuts supplied, secure winch frame to bar (finger tight only). If fitting winch, secure control box to motor with 2x hose clamps and 2x urethane blocks supplied.

For further information contact T.J.M. Head Office on (07) 3865 9999. Distributors Australia wide.



18. **Steel Bullbar:** - Using 4x M12x1.25x35mm bolts, spacer, flat and spring washers supplied, secure bar to vehicle (finger tight only). Spacer to be fitted between chassis mount and chassis on top fixing both sides. Shimming washers may be required to level bull bar on vehicle.
19. **Steel Bullbar:** - Refit toe hook to passenger side using original bolts (finger tight only).



20. **Alloy Bullbar:** - Using 4x M12x1.25x35mm bolts, spacer, flat and spring washers supplied, secure chassis mounts to vehicle (finger tight only). Spacer to be fitted between chassis mount and chassis on top fixing both sides.
21. **Alloy Bullbar:** - Refit toe hook to passenger side using original bolts.



22. **Alloy Bullbar:** - Using 4x M12x1.25x35mm bolts, flat and spring washers and nuts supplied secure winch frame between chassis mounts leaving loose for bar fitment.

For further information contact T.J.M. Head Office on (07) 3865 9999. Distributors Australia wide.



23. **Alloy Bullbar:** - Using 4x M12x1.25x35mm bolts, spacer, flat washers, spring washers and nuts supplied, secure bull bar to chassis mounts (finger tight only).

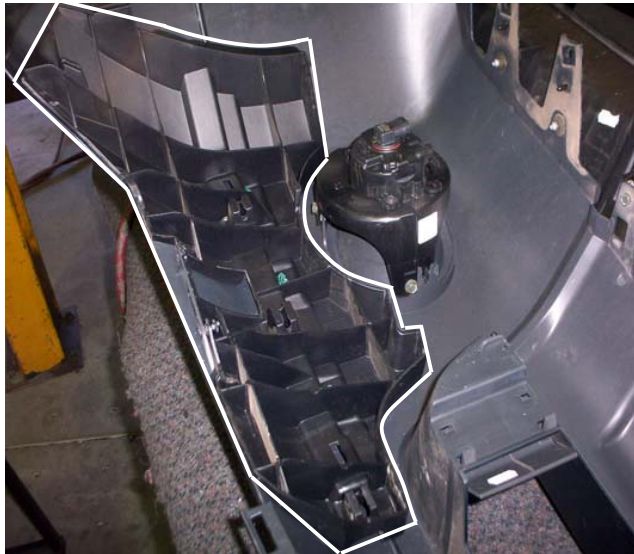


24. Drill out 3x rivets either side from top of bumper.



25. Cut inner bracing panel both sides.

For further information contact T.J.M. Head Office on (07) 3865 9999. Distributors Australia wide.

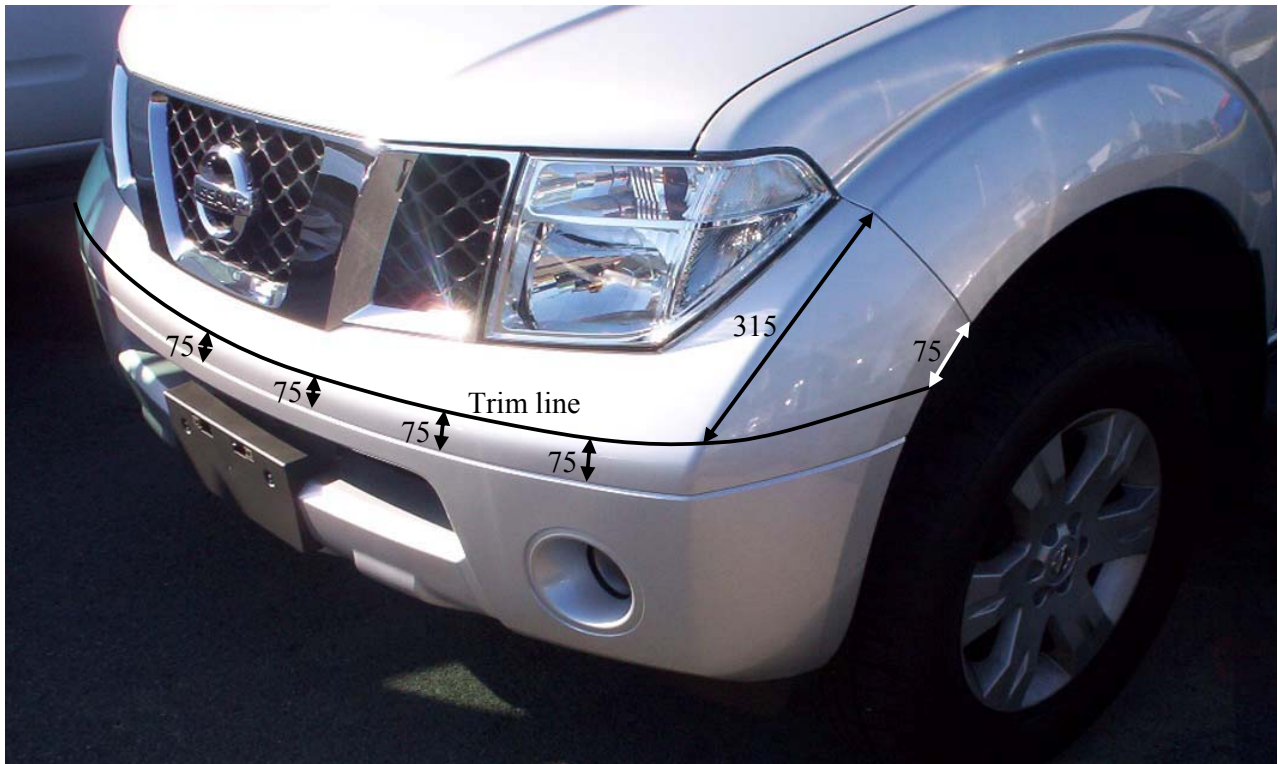


26. Remove stiffening panel from both sides of bumper.



27. Navara Steel and Alloy bull bars: - Mark as per above detail and trim.

For further information contact T.J.M. Head Office on (07) 3865 9999. Distributors Australia wide.



28. Pathfinder Steel and Alloy bull bars: - Mark as per above detail and trim.

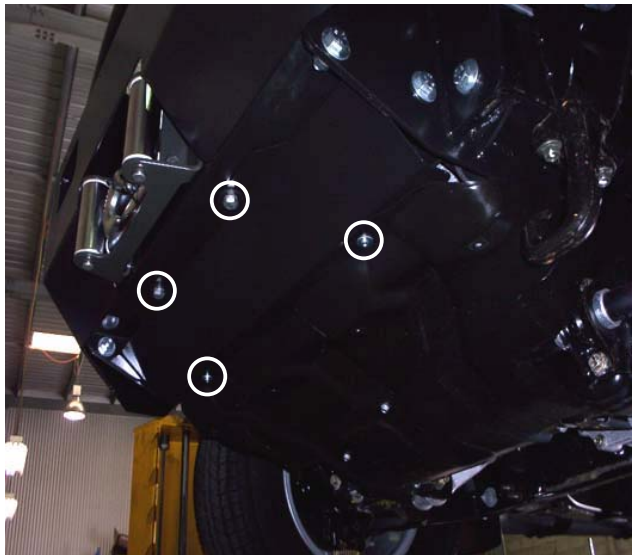


29. Tighten all fixings to correct tensions.
30. Test fit bumper and check trim length.
If required, re-trim bumper so that the bottom runs parallel to the bull bar.

For further information contact T.J.M. Head Office on (07) 3865 9999. Distributors Australia wide.



31. Fit pinch weld supplied to trimmed bumper and refit to vehicle.
32. Refit grill.



33. **Not fitting winch:** - Use M10x1.25x20mm bolts, nuts, flat and spring washers supplied fit front underbody guard to front winch mounting holes. Refit OE underbody guard and bolts also with M8x1.25x20mm bolts, flat and spring washers supplied.
34. **Fitting winch:** - Tension rear winch bolts before securing front underbody guard. Secure under body guard to front winch mount bolts. Refit OE underbody guard and bolts also with M8x1.25x20mm bolts, flat and spring washers supplied.

For further information contact T.J.M. Head Office on (07) 3865 9999. Distributors Australia wide.



35. Completed fitment of Steel Bullbar to Nissan Pathfinder.



36. Completed fitment of Alloy Bullbar to Nissan Navara.

For further information contact T.J.M. Head Office on (07) 3865 9999. Distributors Australia wide.